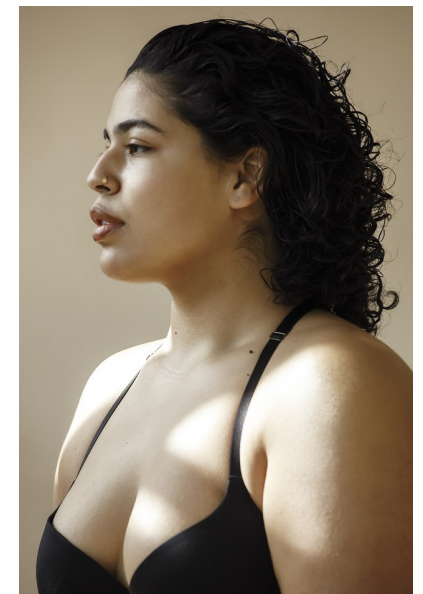




Naomi L

HEIGHT 5'9" BUST 40" C WAIST 38" HIPS 48" DRESS 16 US SHOE 10  
US HAIR BLACK EYES BROWN



**TRUE**  
MODEL MANAGEMENT

265 W 37th Street | New York, NY 10018  
+1 212-239-8783 | [info@truemodel.net](mailto:info@truemodel.net)