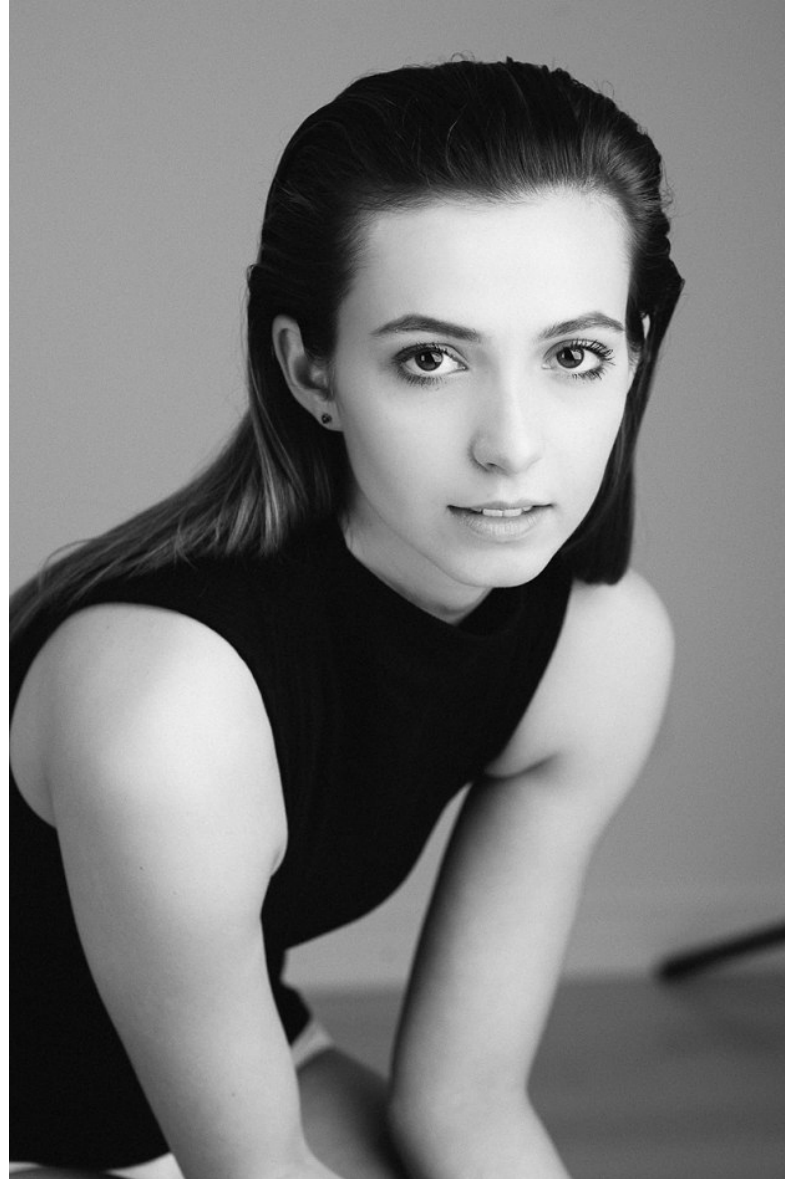


TRUE

MODEL MANAGEMENT



Anjelica Bette

HEIGHT 5'5" BUST 32" B/C WAIST 24" HIPS 35" DRESS 2-4 US SHOE 7.5 US HAIR LIGHT BROWN EYES HAZEL

TRUE

MODEL MANAGEMENT



Anjelica Bette

HEIGHT 5'5" BUST 32" B/C WAIST 24" HIPS 35" DRESS 2-4 US SHOE 7.5 US HAIR LIGHT BROWN EYES HAZEL

TRUE

MODEL MANAGEMENT

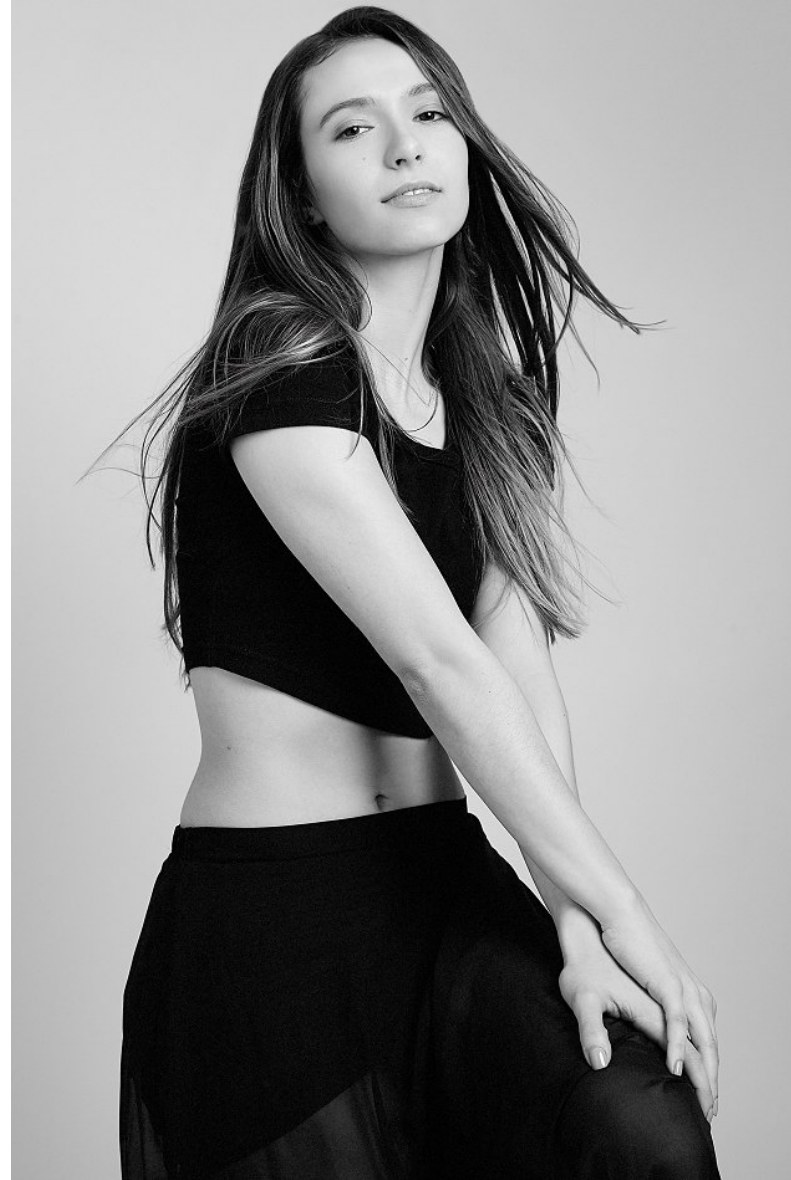


Anjelica Bette

HEIGHT 5'5" BUST 32" B/C WAIST 24" HIPS 35" DRESS 2-4 US SHOE 7.5 US HAIR LIGHT BROWN EYES HAZEL

TRUE

MODEL MANAGEMENT



Anjelica Bette

HEIGHT 5'5" BUST 32" B/C WAIST 24" HIPS 35" DRESS 2-4 US SHOE 7.5 US HAIR LIGHT BROWN EYES HAZEL

TRUE

MODEL MANAGEMENT



On him: Double-breasted wool-and-cotton suit (or ice upon request) by Bally, bally.com. Denim shirt (\$265) by Etone, etonehirts.com. Steel Safari Chronometer watch (\$3,800) by Ralph Lauren, ralphlaurenwatches.com. Nylon-and-turquoise bracelet (\$140) by Scosha, scosha.com. Shell-and-silver bracelet (\$72) by George Frost, kufrost.com.

On her: Blouse by Zacly & Voltare.
Pants by Bendito.

Anjelica Bette

HEIGHT 5'5" BUST 32" B/C WAIST 24" HIPS 35" DRESS 2-4 US SHOE 7.5 US HAIR LIGHT BROWN EYES HAZEL